



Artsmark
Gold Award
Awarded by Arts
Council England



ST HELENS PRIMARY

Friday 3rd May 2024

Dear Parents and Carers,

We have had another enjoyable week where the children have been on their usual great form. I have shown a few new potential students around the school which demonstrates the great opportunities the children continue to get at our small yet popular school. Hopefully we will welcome a few new faces to the school in the near future.

Mardi Gras was a success this week and I note that Mr Hammerton's Key Stage 2 Club is full and as popular as ever. I know he loves working with the small groups of dedicated students. Skateboard club and other sports clubs continue to be popular.

In class the very popular environmental area is well used for geography, maths and science lessons. Children tend to love a bug hunt. Thank you to Mr Andre for his continued efforts.

Explorers have enjoyed their outdoor area this week, planting, investigating, cycling and so much more.

The three prime areas of: communication and language, physical development and personal, social and emotional development have been in full swing as usual.

I watched a good phonics lesson this week. Arabella, Betty, Isabella and others have retained their tricky word knowledge to good effect and were able to remember, and spell words including all, they, and was.

In Adventurers, art, maths and English are ever popular but they have also loved the chances to investigate in the environmental area.

Discoverers love their maths. I enjoyed seeing how they had developed their knowledge of the four arithmetical rules. Children challenged themselves with problems involving addition, division and subtraction. Macie, Micah, Logan, Atticus, Abbie and Barnaby demonstrated good efficient strategies.

In Pioneers the clay horse heads based on the class text are amazing.

As we approach assessment week, Maths and English are taking a front seat. The children have retained a very impressive attitude and commitment to doing themselves justice.

Next week we have a short four day week due to bank holiday Monday of course.
 A particular highlight is the class trip to Butterfly World which they are all looking forward to.
Have a great weekend

Mr Wake

Attendance week from: 22/04/2024 to 26/04/2024

Class	Attendance	Late Arrivals	Minutes Lost Through Lateness	Unauthorised Absences	Authorised Absences
Explorers	87.8%	0	0	0	16
Adventurers	98%	0	0	4	2
Discoverers	90.4%	0	0	0	23
Pioneers	93.8%	0	0	11	5

Although we strive for 100%, our whole school attendance for this week was 93.4% which is **below** the national expectation of 96%

If your child is too unwell to attend school please contact us to let us know. You can phone on 872442 or email us on admin@sthelenspri.iow.sch.uk If you let us know by phone please can you put the reason for your child's absence in writing when they return to school otherwise the absence will be marked as unauthorised. We are required to ask you for this in order to follow the Local Authority attendance procedures, and if we don't receive a letter or email we have to follow it up.



THIS WEEKS AWARDS



<u>Class</u>	<u>Worker of the Week</u>	<u>Star of The Week</u>
Explorers	Layton	Harvey
Adventurers	Oakleigh	Ruby
Adventurers	Athena	Mabel
Discoverers	Noah	Max
Discoverers	Selena	Atticus
Pioneers	Ellena	Lylah
Pioneers	Katy	Evie



We would like to wish a very 'Happy Birthday' to the following children who celebrate their special day this week:

Sami age 10

School Dinner Menu (£2.75) per day or free to Reception, Year 1 & 2 pupils)

On **TUESDAYS and THURSDAYS only**, the children will be able to order baguettes - fillings cheese, tuna or ham.

Chartwells SCHOOL		WEEK 1 W/C: 15/04, 05/05, 03/06, 24/06, 15/07, 09/09, 30/09				
		MONDAY	TUESDAY	WEDNESDAY	THURSDAY	FRIDAY
SPRING/SUMMER 2024	HOT SPECIALS	Cheese and Tomato Pizza Served with Half a Jacket Potato	Classic Beef Burger Served with Potab Wedges	BBQ Chicken Served with Ribcut Potatoes	Chicken and Broccoli Pasta Bake	Fish Fingers Served with Chips
	JACKET POTATO	BBQ Quorn Fillet Served with Wholegrain Rice	Vegetarian Burger Served with Potab Wedges	Cheesy Ploughman's Plinic Plate	Chilli No Carne with Crispy Tortilla Served with Wholegrain Rice	Quorn Dippers Served with Chips
	DESSERT	Jacket Potatoes with a choice of hot and cold fillings	Jacket Potatoes with a choice of hot and cold fillings, including Salmon Mayo sauce	Jacket Potatoes with a choice of hot and cold fillings	Jacket Potatoes with a choice of hot and cold fillings	Jacket Potatoes with a choice of hot and cold fillings
Tomato Paste Fresh, homemade tomato and basil sauce with parma pasta						
All main meals are served with two vegetables						
		Crispy Crackle Bar with Fruits	Raspberry Jolly	Carrot, Orange and Sultana Slice	Vanilla Ice Cream	Original Rapjack
		PACKED LUNCH AVAILABLE Mini, Cheese or Tuna baguette served daily with veg sticks and fresh fruit or dessert of the day	AVAILABLE EVERY DAY Water, salad, freshly baked bread, yoghurt & fresh fruit		Vegetarian Oily Fish Wholegrain Fruity! Nutritionist's Choice	

Our menu is subject to change. Please be aware that all certified medical diets and allergy requirements will be fully covered by us.

Chartwells SCHOOL

WEEK 2

WC: 22/04, 13/05, 10/06, 01/07, 22/07, 16/08, 02/10

		MONDAY	TUESDAY	WEDNESDAY	THURSDAY	FRIDAY
SPRING/SUMMER 2024	HOT SPECIALS	Cheese and Tomato Pizza 🍕 Served with Potato Wedges	Beef Bolognese 🍝🍷 Served with Wholewheat Pasta	Roast Pork 🍖 Served with Roast Potatoes and Gavy	Butter Chicken Curry 🍛🍷 Served with Wholegrain Rice	Southern Fried Chicken 🍗 Served with Chips
	JACKET POTATO	Vegetarian Bolognese 🍝🍷 Served with Wholewheat Pasta	Veggie Burrito 🌯🍷	Quorn Roasts 🍖 Served with Roast Potatoes and Gavy	Macaroni Cheese 🍝	Veggie Fingers 🍷 Served with Chips
	JACKET POTATO	Jacket Potatoes 🍟 with a choice of hot and cold fillings	Jacket Potatoes 🍟 with a choice of hot and cold fillings, including Salmon Mayo/mousse 🐟	Jacket Potatoes 🍟 with a choice of hot and cold fillings	Jacket Potatoes 🍟 with a choice of hot and cold fillings	Jacket Potatoes 🍟 with a choice of hot and cold fillings
Tomato Pasta Fresh, homemade tomato and basil sauce with panne pasta 🍷🍷						
All main meals are served with two vegetables						
DESSERT	Chocolate Cookie	Carrot, Orange and Sultana Slice 🍰🍷	Orange Jelly	Chocolate Shortbread with Fruit 🍰	Orange Drizzle	

PACKED LUNCH AVAILABLE
Hain, Cheese or Tuna baguette available daily with veg sticks and fresh fruit or dessert of the day

AVAILABLE EVERY DAY
Water, salad, freshly baked bread, yoghurt & fresh fruit

🍷 Vegetarian 🐟 Oily Fish 🍷 Wholegrain
🍷 Fruity! 🍷 Nutritionist's Choice

Our menu is subject to change. Please be aware that all certified special diets and allergy requirements will be safely catered for. www.chartwells.com

Chartwells SCHOOL

WEEK 3

WC: 29/04, 20/05, 17/06, 08/07, 02/08, 23/08, 14/10

		MONDAY	TUESDAY	WEDNESDAY	THURSDAY	FRIDAY
SPRING/SUMMER 2024	HOT SPECIALS	Cheese and Tomato Pizza 🍕 Served with Potato Wedges	Pork Sausages 🍖 Served with Mashed Potato and Beans	Roast Chicken 🍗 Served with Roast Potatoes and Gavy	Cottage Pie 🍷 Served with Gavy	Fish Fingers 🐟 Served with Chips
	JACKET POTATO	Tomato and Herb Lentil Pasta 🍷🍷	Vegetarian Sausage 🍖 Served with Mashed Potato and Beans	Cheese and Onion Pie 🍷 Served with Roast Potatoes and Gavy	Meatless Balls in Tomato Sauce 🍷 Served with Rainbowrice	Quorn Dippers 🍷 Served with Chips
	JACKET POTATO	Jacket Potatoes 🍟 with a choice of hot and cold fillings	Jacket Potatoes 🍟 with a choice of hot and cold fillings, including Salmon Mayo/mousse 🐟	Jacket Potatoes 🍟 with a choice of hot and cold fillings	Jacket Potatoes 🍟 with a choice of hot and cold fillings	Jacket Potatoes 🍟 with a choice of hot and cold fillings
Tomato Pasta Fresh, homemade tomato and basil sauce with panne pasta 🍷🍷						
All main meals are served with two vegetables						
DESSERT	Chocolate Brownie with Fruit 🍰	Strawberry Jolly	Banana Cake 🍰	Lemon Sicilian Coolée	Chocolate Ice Cream	

PACKED LUNCH AVAILABLE
Hain, Cheese or Tuna baguette available daily with veg sticks and fresh fruit or dessert of the day

AVAILABLE EVERY DAY
Water, salad, freshly baked bread, yoghurt & fresh fruit

🍷 Vegetarian 🐟 Oily Fish 🍷 Wholegrain
🍷 Fruity! 🍷 Nutritionist's Choice

Our menu is subject to change. Please be aware that all certified special diets and allergy requirements will be safely catered for. www.chartwells.com

If your child would like the vegetarian option on a particular day, please can they let their teacher know so we can order enough portions from The Bay kitchen.

Dates for Your Diary

Monday 6th May

Wednesday 8th May

Monday 13th to Thursday 16th May

Monday 20th May

Friday 24th May

Monday 3rd June

Monday 17th June

Monday 17th to Wednesday 19th June

Friday 12th July

Tuesday 23rd July

Wednesday 24th July

Friday 26th July

Friday 26th July

Friday 26th July

- May Bank Holiday – school closed

- Explorers Butterfly World trip

– KS2 SATs

- Class Photos with Cardwell & Simons

- School closes at 3.00pm for half term

- School reopens at 8.45am for Summer term 2

- RNLI Day

– Year 5/6 Residential trip

- FOSH Summer Fayre

- Sports Day 9.30am-12.00pm

- Back-up sports day (in case of rain) 9.30am-12.00pm

- Leavers Assembly 11.00am-12.00pm

- Whole school picnic & leavers races 12.00-3.00pm

- School closes at 3.00pm for Summer holidays

This Week's Class Updates

Explorers

We have had a great week in Explorers!

In phonics this week we have started phase 4, we will be about consolidating and improving their knowledge, while introducing trickier words with increased vocabulary.



In maths this week we have continued with our doubling and halving. The children have enjoyed using bees and beehives to practise halving numbers as well as using lots of counters and concrete resources to help them understand what halving means!

We have enjoyed talking about how different people celebrate May day around the world. We talked about what we liked and disliked about different traditions. The children liked the idea of jumping over fires or making noises to scare the snakes to protect themselves, which is what they do in Bulgaria. As well as having bonfires or decorating their houses with wildflowers like they do for Beltane in Scotland and Ireland.

We have started doing Mindful Music on a Friday afternoon. The children enjoyed listening to a story this week about a boy going on an adventure with his cat and using his binoculars to see all of his emotions. They then played a game like hide and seek where they used percussion instruments to help the seeker find the missing cat by changing how loud they played their instruments!

Have a lovely bank holiday weekend.



Adventurers

We've had a busy week in Adventurers.

Today we completed our 'Blue Whale' leaflets, which concludes our work on this text! Keep an eye out next week for what our new text could be...

Maths we have continued to explore counting in 2s, 5s and 10s but this time through multiplication and division. We've had a go at some grouping today – see if your child can show you an example of grouping with some toys at home!

In RE we are continuing with our concept of 'Special food' and what we might eat at a special occasion and why.

We enjoyed having some glockenspiels to create some underwater themed music. Today we looked specifically at the word 'pitch' and how this is the sound of whether a note is high or low.

Continuing with our living things and their habitats topic, this week we had look at some different leaves. We observed things such as their shape, colour, size, feel, symmetry, edges and veins. We can't believe how different they can be!

Enjoy the 3 day weekend and we will see you all on Tuesday.



Discoverers

This week in maths we were doing addition, subtraction and division. We were answering questions going from them.

In art we made long boats and painted them. We made sails for them and coloured them red to represent blood.

This week in science we went on a invertebrate hunt and tried to find all of the beetle and bugs on the list.

In English and we did instructions for how to catch a dragon. All the children came up with their own instructions on how to catch a dragon.

In PE we did tennis with Mrs Henry and yoga with Mrs Royal.

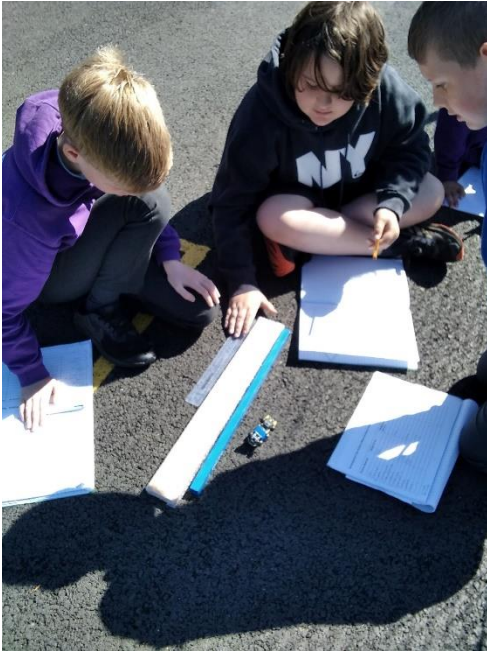
In computing we researched about endangered animals to help support our science work.

By Georgie

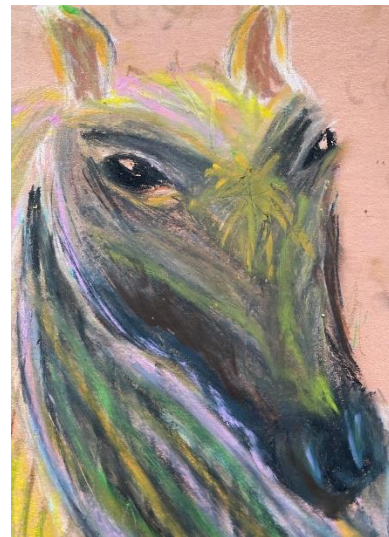
Pioneers

This week in Pioneers class in science we were exploring friction and making full use of the ability to work outside for their investigation. The children in groups were taking measurements of many different surfaces

(including bubble wrap, felt, tarmac, woodchip and grass; here are a couple of photos.



We are continuing with horse studies in art and this week we were using, experimenting with oil pastels and working out what colours we want to paint our clay horses' heads.



This week our *Little Light* was collected and now we wait to find out where it is going to be placed on the trail. The children were all involved in this collaborative project. See below for an explanation of how our Little Light was produced.



The LITTLE LIGHT STORY
St Helens Primary School, St Helens village, Isle of Wight

St Helens Primary School is a small, vibrant village school on the Isle of Wight. There are 96 children currently attending school aged from 4 - 11 years. All ages of children were involved in the design and painting of this lighthouse. It was a collaborative project in which we wanted to reflect and try to represent our local area.

This unique Little Light began life on one of St Helens Primary School's WellBeing Days (held termly). At St Helens School a Well Being Day is a structured day when the children work in teams of approximately 24. They are organised in their house group teams. There are a mix of children aged 4 -11 years working, supporting and connecting with each other and taking part in four separate activities. The activities are always different but embrace WellBeing themes with the elements of creativity, physical activity and mindfulness as part of the day.



All the children in the school were encouraged to design their own lighthouse. So altogether there were 96 designs. The final working design for the lighthouse grew organically. Following further discussions we decided as a school that it was important to reflect our local village area and represent it and include a couple of landmarks. This was as well as getting as many children actively involved as possible by including their patterns and designs.

At the base of the Little Light are two geese. St Helens, which is a small village on the eastern coast of the Isle of Wight is known locally as “Goose Island” because historically when there were ponds on the expansive village greens, geese would flock there. There is a connection with the past as every Autumn the children watch (and hear) the geese fly in formation over the school as they head south. Symbolically the geese are still very evident in the village, for instance on the village sign and in many local business names.

Also included on the Little Light is a depiction of St Helens Fort, a Napoleon fort in the bay of the beach; this is a sight the children are aware of and have sketched whilst at the beach (often whilst at “Beachschool”). Additionally included in our design is the ruin of St Helens Church situated on St Helens Duver, which is another local landmark. The children’s connection to and love of their local area is evidenced through their design ideas and our final production.

The children of St Helens Primary school love animals and many of their designs involve sea creatures. The local children love to rock pool at the beach too. A particular favourite are jellyfish, which of course we do see in the Solent. The children are very influenced by the sea and the natural world. So patterns and other designs have been added by them; in particular a rainbow was added by Arabella in Year R who said “I wanted to put a rainbow on the Little Light because seeing a rainbow makes me happy.” This rainbow theme was reflected in a great deal of the children’s original designs, so it had to be included.

At the very top of the Little Light we wanted to have something that all 96 children could draw easily: something that was inclusive. Initially we thought stars because we are all stars at St Helens Primary School and then maybe fish, but finally we settled on birds flying. These flying birds, whilst they are representative of every child in the school (and a complement to the geese) are also a symbol of aspiration and freedom. At St Helens Primary School it is always our aspiration that we give all our children the freedom to grow as individuals (and fly away.)

Textile Bank

Don't forget that we have a textile bank where you can donate unwanted **clothes, belts, paired shoes, bags, hats, (in a tied bag)**. The donated items will be collected and weighed fortnightly and the school will receive 20p per kilo towards our funds. **Donated items (bagged please) should be left near to the front entrance of the school. Please let the office know you have left items!** **Please do not donate duvets, pillows, cushions, household textiles, soiled rags, curtains, blankets as the recycling company will deduct the cost of disposing of these items from our overall total raised.**

Remember to look at the school website for the latest school updates and information at www.sthelenspri.iow.sch.uk

Schools
Walk the Wight
with
MOUNTBATTEN

Isle of Wight
AWARDS of excellence
2023
GOLD AWARD
BEST ISLAND
EVENT

Sunday, 12 May 2024
Register now: mountbatten.org.uk/swtw



Schools Walk the Wight Leaderboard

1st	Carisbrooke CE Primary	£1,350
2nd	Ryde School With Upper Chine - Juniors	£1,153
3rd	Nine Acres Primary	£1,000
4th	Lanesend Primary	£974
5th	Hunnyhill Primary	£894



**May Half Term
Football Fun Camps**
A truly unique inflatable Football experience

Scan Here
to book!

www.thefootballfunfactory.co.uk



School Holiday Football Fun

Join us for an action-packed day Football Fun Camp using our 3 truly unique football inflatables.

Our Football Fun Camps run from 9am - 3:30pm throughout the school holidays



Inflatable Goal Inflatable Dartboard Inflatable Pitch

Scan Here
to book!

FFF MAY HALF TERM FOOTBALL FUN CAMP!

The Football Fun Factory was created to provide incredible childhood football experiences for boys and girls of all ages and ability levels. Our mission is to use the nation's passion for football as a vehicle for child development. We believe that the focus should not be simply on development or progression... **we should be focusing on having fun!**

Our ethos is all about creating an incredible environment where children can express themselves, play, make friends and have fun!

Tuesday and Wednesday 28 - 29 May at Ryde Academy.
Open to children aged 5-12 years old, any gender and any ability.
Doors open at 9am until 3.30pm.
I offer a 50% sibling discount with every booking.

For more information, please contact Danny either by email danny@thefootballfunfactory.co.uk or any of the social platforms.